



# HRVCA Fall Meeting Agenda

## 13 Dec 2023

- Introductions and Agenda
- Treasurer's Report and Dues – Mike Paup
- Crime Report – Jim Robinson
- New Initiatives – Jacke Zeiher
- Election of Directors – Clyde Miller
- Traffic Safety Survey – Clyde Miller
- **Question: Any Additional Topic to Discuss This Evening?**

# Traffic Safety Survey: Context, Process, and Results

## Survey Objective

(Ref: Report of 12 Apr Spring Meeting)

- Objective:
- Summarize community traffic safety issues
- Engage FCDOT for recommendations re how the issues can be mitigated/resolved
- Not the Objective:
- Identify and resolve everyone's issue
- Rather the survey has identified issues and taken steps to potentially mitigate some issues
- Next steps depend upon efforts of members

## The Issues: Principal Generic Concerns

- Vehicles speeding on all principal streets
- Vehicles running stop signs at all intersections
- High traffic volume, some of it cut-thru
- Lack of adequate sidewalks and crosswalks in many areas
- Numerous sharp/blind curves and steep hills on our streets
- Children outside and pedestrians (walkers)

# The Issues: Hot Spots

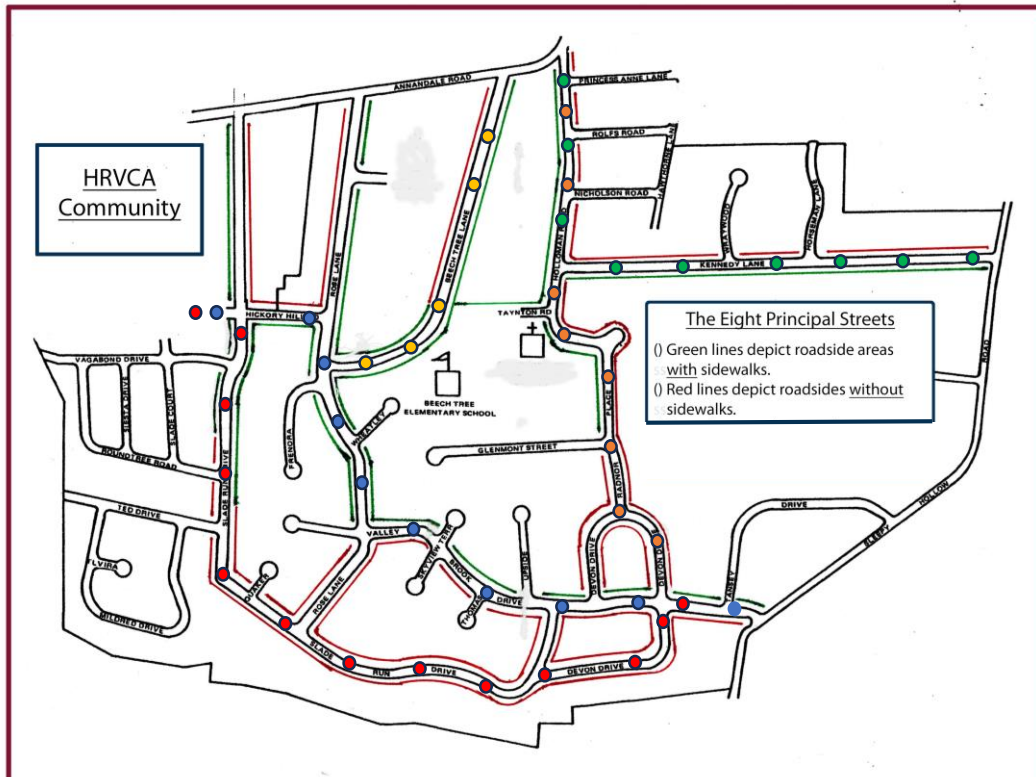
- Crossing Valley Brook Dr at Skyview Ter
- Speeding on Valley Brook at Thomas Ct
- Crossing Valley Brook east of Slade Run Dr
- Speeding on Devon South approaching Valley Brook
- Two collisions at intersection of Valley Brook and Devon South
- Beechtree Lane “raceway” when Beech Tree School opens and closes on school days
- Speeding on Radnor Pl and down hill on Slade Run Dr



## How Issues Can Be Resolved

- Fairfax County Residential Traffic Administration Program (RTAP)
  - Speed humps are best means for combatting speeding
- Police enforcement is best counter to vehicles running stop signs
- Opportunities for additional crosswalks are limited by sight lines and lack of sidewalks on both sides of the street
- Stop signs can improve safety at intersections but are not approved for countering speeding

# The Eight Principal Streets & Cut-Thru Routes (Hickory Hill Is Not Included)



- Valley Brook to Rose to Hickory Hill
- Devon South to Slade Run to Hickory Hill
- Kennedy to Holloman
- Devon North to Radnor to Holloman
- Beechtree

# Traffic Survey and Analysis Process (Phase 1: Data Collection)

- **April 12** – Spring meeting resolution to survey traffic safety issues
- **Jul 21** – On-line survey opened. Closed on Aug 10
- **Aug 15** – Raw survey data distributed to members via Google Group
- **Sep 9** – Report of survey results distributed to members (10 pages)
- **Sep 18** - Email meeting request to Mason Station, FCPD
- **Sep 21** – Telecon with Clara Pizana & request for meeting with FCDOT
  - Clara Pizana: Mitigations offered by FCDOT are on the RTAP chart.
- **Oct 13** – Meeting with Captain Patrick Bruschi, Mason Station Commander, FCPD
  - Captain Bruschi: “Keep Station informed re your traffic issues. We will respond accordingly.”
- **Oct 25** – Virtual meeting with FCDOT staff and Clara Pizana re mitigation options

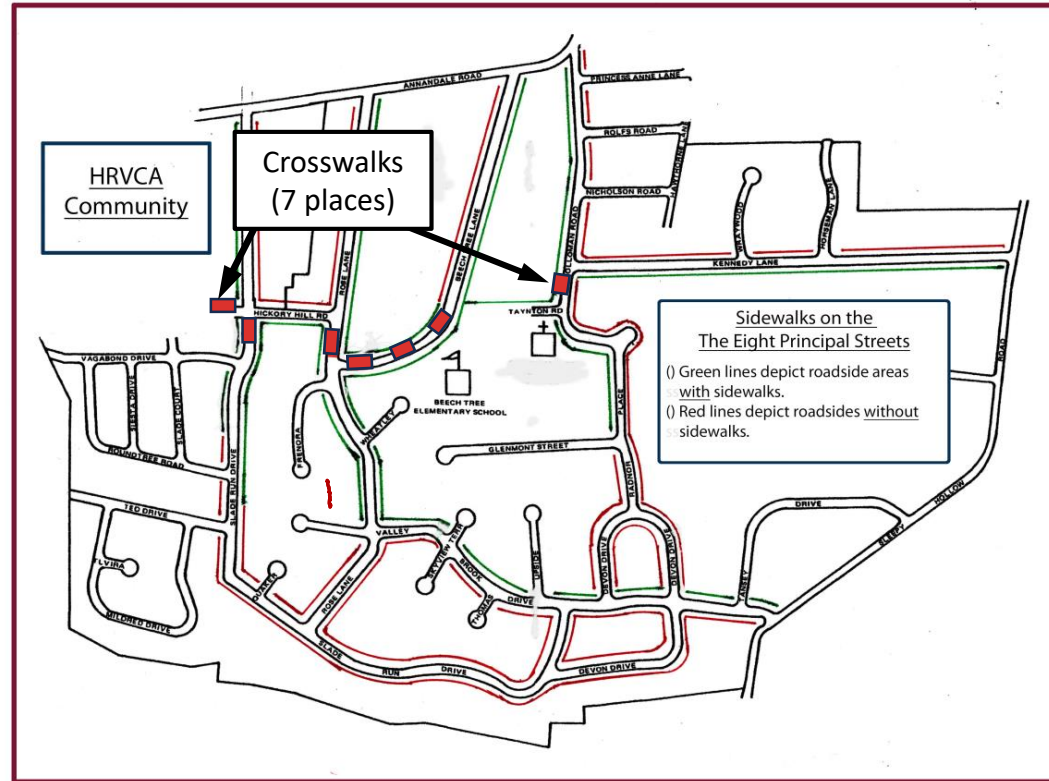


# Traffic Survey and Analysis Process

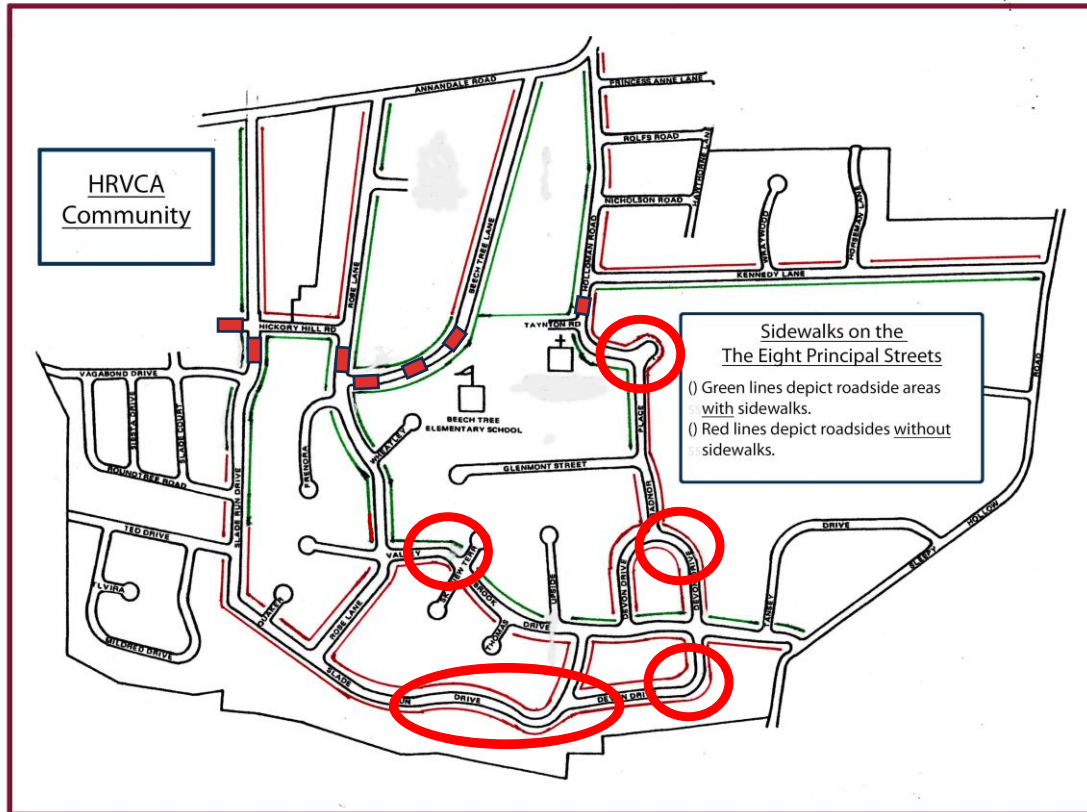
## (Phase 2: Analysis, Discussion, & Conclusions)

- **Nov 8** – Zoom Meeting with the 87 survey respondents re mitigation
  - Board Recommended \$200 signs and Watch for Children signs. (20 of 81 attended)
- **Nov 15** – Zoom meeting with HRVCA membership re mitigation
  - Board recommended \$200 signs and WfC signs. (21 of 257 attended)
- **Nov 28** – Clara provided FCDOT answers to 8 questions from Oct 25 meeting
  - FCDOT responses distributed to members on Nov 29
- **Nov 29** – In email to Supervisor Gross, Board requested \$200 signs and Watch for Children signs
  - Copy of email was distributed to members on Nov 29
- **Dec 11** – Clara notified Board that Supervisor Gross had approved our request
  - FCDOT will install the signs in accordance with program guidelines
  - No further action is required of HRVCA Board

# Four Crosswalks for Beech Tree School and Only Three More. Some Streets Have No Sidewalks (esp. Devon South).



# Sharp/Blind Curves and Limited Sight Lines



# County Residential Traffic Administration Program (RTAP)

## References:

FCDOT Residential Traffic Administration (RTAP) [Web Site](#)

FCDOT RTAP Quick Reference Chart [Guide](#)

FCDOT Traffic Calming General Operating [Procedure](#)

VDOT Neighborhood Traffic Programs [Web Site](#)

VDOT Traffic Calming [Guide](#)

# The RTAP Chart – Five Options



## Fairfax County Department of Transportation Residential Traffic Administration Program (RTAP)

Updated 03/03/2020



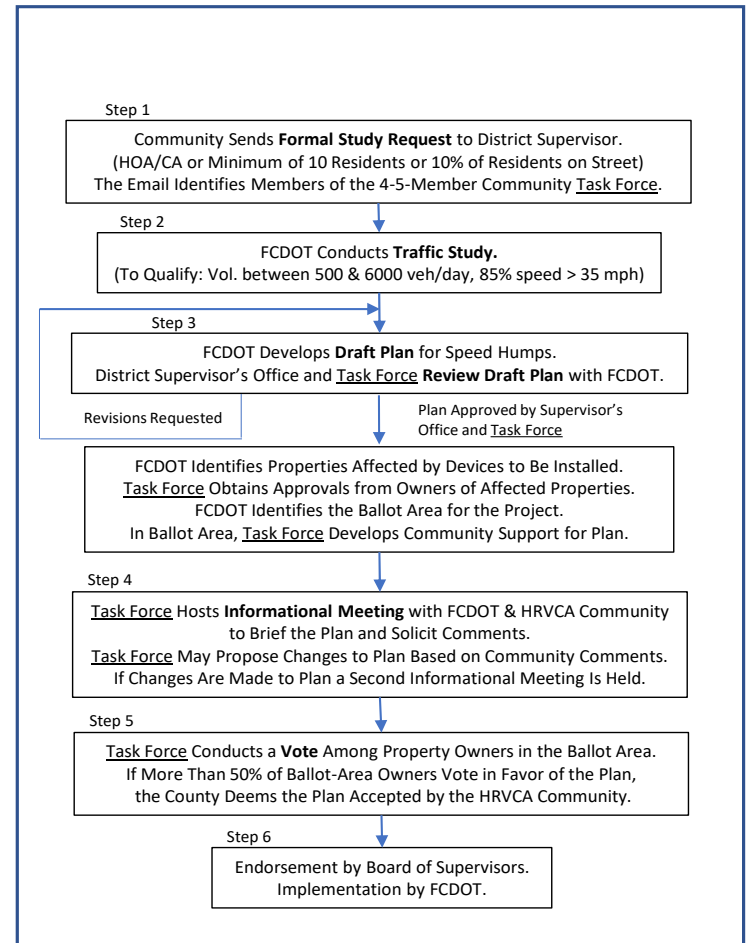
	Traffic Calming	Cut-Through Mitigation	\$200 Fine for Speeding Signs	Watch for Children Signs	Through-Truck Restriction
<b>Measures</b>	Physical devices installed in roadway to slow vehicles to the speed limit. Examples include speed humps, speed tables and pavement markings.	Access restrictions or route modifications to decrease traffic volume.	“\$200 Additional Fine for Speeding” signs added underneath speed limit signs.	“Watch for Children” signs installed where appropriate in the community.	Prohibits use of a road by trucks that are not making stops in a neighborhood.
<b>Qualification</b>	<ul style="list-style-type: none"> <li><input type="checkbox"/> Local, residential collector or residential minor arterial road with a 25 MPH speed limit.</li> <li><input type="checkbox"/> The road must have 500 to 6,000 vehicles per day.</li> <li><input type="checkbox"/> 85th percentile speed of vehicles at least 10 MPH over the posted limit.</li> </ul>	<ul style="list-style-type: none"> <li><input type="checkbox"/> The road must be a local residential street with a 25 MPH speed limit.</li> <li><input type="checkbox"/> A minimum of 150 cut-through trips in one hour in one direction and 40% or more of the total one hour, single direction volume must be cut-through traffic.</li> </ul>	<ul style="list-style-type: none"> <li><input type="checkbox"/> The road must be a local road, a collector road, or a minor arterial with a speed limit of 35 MPH or less.</li> <li><input type="checkbox"/> The road must have at least 600 vehicles per day.</li> <li><input type="checkbox"/> The 85th percentile speed of vehicles is at least 10 MPH over the speed limit.</li> </ul>	Eligible locations are limited to community entrances, playgrounds, daycare or community centers, and other areas of concern.	<ul style="list-style-type: none"> <li><input type="checkbox"/> The road must be either:                             <ul style="list-style-type: none"> <li>◇ a local or collector road in a residential neighborhood</li> <li>◇ a minor arterial or primary road with at least 12 dwellings per 1000 feet of roadway.</li> </ul> </li> <li><input type="checkbox"/> A safety concern indicates a need for the prohibition.</li> </ul>
<b>Procedure</b>	<ol style="list-style-type: none"> <li>1)The community sends its request to the District Supervisor, who forwards it to FCDOT. FCDOT conducts traffic study to determine if the road qualifies.</li> <li>2)FCDOT works with community members to develop a traffic calming plan.</li> <li>3)FCDOT and the community present the plan at a community meeting.</li> <li>4)The community votes on the proposal.</li> <li>5)If the community votes in favor, the plan is endorsed by the Board of Supervisors and a resolution is sent to VDOT for approval. Installation is scheduled with DPWES.</li> </ol>	<ol style="list-style-type: none"> <li>1)The community sends its request to the District Supervisor, who forwards it to FCDOT.</li> <li>2)FCDOT conducts traffic study.</li> <li>3)Community petition to verify support. The Board of Supervisors (BOS) approves a resolution requesting VDOT action.</li> <li>4)FCDOT, VDOT and task force draft a plan.</li> <li>5)Community informational meeting is held. Then, the community votes on the plan.</li> <li>6)VDOT and the BOS conduct joint public hearing.</li> <li>7)The BOS approves a resolution requesting VDOT to implement measures.</li> <li>8)VDOT determines whether to implement the plan.</li> </ol>	<ol style="list-style-type: none"> <li>1) The community sends its request to the District Supervisor, who forwards it to FCDOT.</li> <li>2) FCDOT conducts traffic study.</li> <li>3) If the road meets the qualification criteria, the District Supervisor confirms community support for \$200 Additional Fine for Speeding signs.</li> <li>4) The Board of Supervisors endorses the installation of \$200 Additional Fine for Speeding signs.</li> <li>5) FCDOT sends request to VDOT for the installation of the signs.</li> </ol>	<ol style="list-style-type: none"> <li>1) The community sends its request to the District Supervisor, who forwards it to FCDOT.</li> <li>2) FCDOT reviews the neighborhood to determine locations that meet the qualification criteria.</li> <li>3) If FCDOT finds eligible locations, the District Supervisor confirms community support for Watch for Children signs.</li> <li>4) The Board of Supervisors endorses the installation of Watch for Children signs.</li> <li>5) FCDOT schedules installation of Watch for Children signs.</li> </ol>	<ol style="list-style-type: none"> <li>1)The community sends its request to the District Supervisor, who forwards it to FCDOT.</li> <li>2)FCDOT conducts a preliminary analysis of the road to determine eligibility.</li> <li>3)The Board of Supervisors conducts a public hearing to approve a resolution to VDOT for the through truck restriction.</li> <li>4)VDOT conducts an engineering review and solicits public comment.</li> <li>5)VDOT determines whether to implement the restriction.</li> </ol>

Additional information can be found at <http://www.fairfaxcounty.gov/transportation/residential-traffic-administration> or by calling 703-877-5600 TTY 711

## Option 1: Traffic Calming Program

- Objective: Physical devices are installed in travel lanes to slow traffic to the speed limit
- Process:
  - Residents establish a Task Force committed to executing the process
  - Task Force letter to District Supervisor requests specific street(s) to be evaluated in the program
  - FCDOT performs a traffic study and recommends one of more of 10 device types to be installed in travel lane(s)
  - Thru a series of private and public meetings Task Force, Supervisor, and FCDOT review and publicize a recommended deployment of devices.
  - Affected residents vote via mail to accept the plan.
- Note: The resident Task Force is a prerequisite for entering the program.

# Traffic Calming Program Procedure

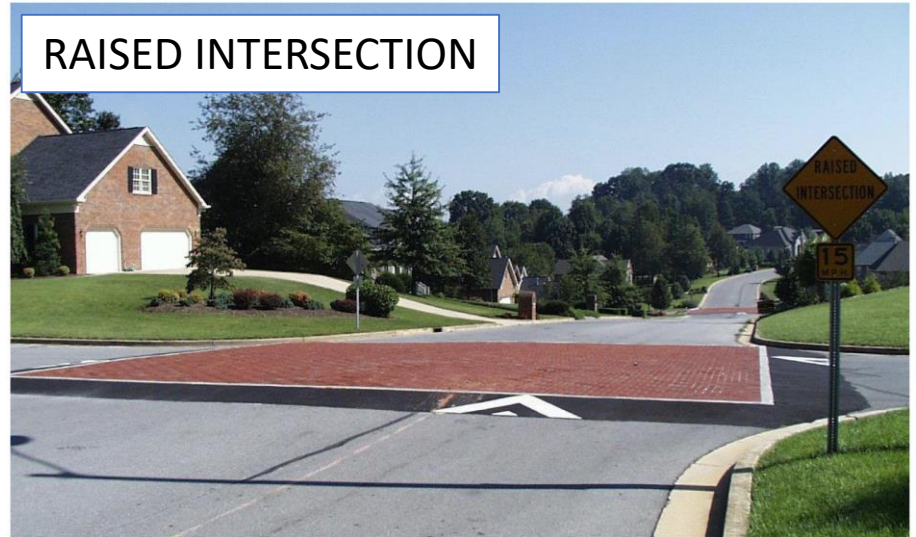


# Traffic Calming Program: Vertical Measures

HUMP



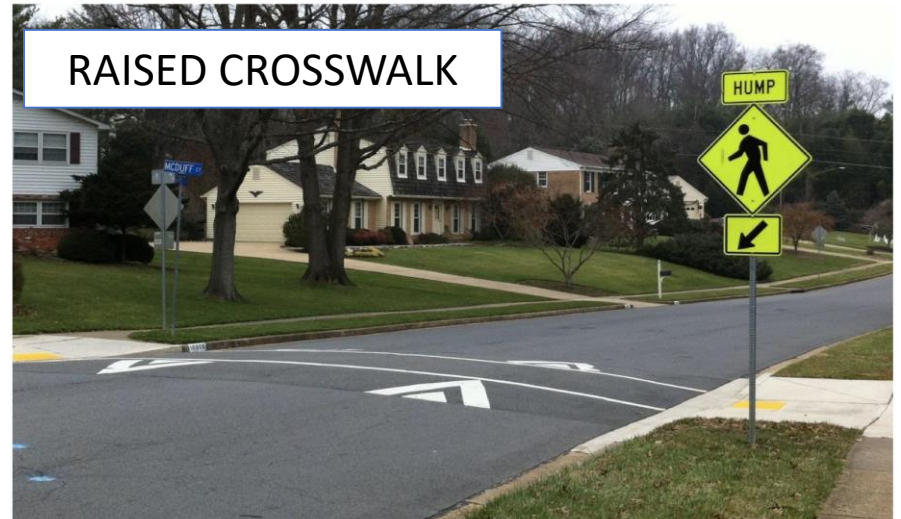
RAISED INTERSECTION



LUMP



RAISED CROSSWALK



TABLE





# Traffic Calming Program: Horizontal Measures



## The Four Other RTAP Options

- Cut-Thru Mitigation:
  - Restrict access to community street(s)
  - Board has not pursued this option
- \$200 Additional Fine for Speeding Signs
  - Signs posted at community entry points
  - Recommended by Board
- Watch for Children signs
  - Posted at community entry points
  - Recommended by Board
- Through-Truck Restriction
  - Trucks not stopping in neighborhood restricted
  - These signs currently posted in our community



## Speed Display Signs

- Currently FCDOT does not install or use speed display signs
- Mason Station FCPD has 3 signs for temporary use in hot spots:
  - Captain Bruschi indicated that one unit could be available here for a two-week period every 4-6 months depending upon demand
- Arlington County uses them to slow traffic in hot spots.
- The FCPD sign sited at the Valley Brook/Skyview intersection for several weeks last summer seemed effective.



## Relative Effectiveness of Options vs Speeding

- Speed Humps (or other vertical measure):
  - FCDOT: Most effective option to combat speeding
  - VDOT: Expect 5-8 mph reduction in average speed
- Speed Display Signs:
  - FCDOT: Best suited to higher volume roads such as Sleepy Hollow Rd
  - VDOT: Expect 5 mph reduction in average speed
- \$200 Fine Signs:
  - FCDOT: Has very little data re. effectiveness. Would be more appropriate on larger roads.
  - VDOT: No data
- Board Recommendation:
  - \$200 Fine signs plus (occasional) FCPD enforcement (traffic monitoring) plus temporary installation of FCPD Speed Display signs in hot spots

## Board-Recommended \$200-Fine-Signs Program

- Install Additional-\$200-Fine-for-Speeding signs:
  - At all community entrances and on all eight streets
- Coordinate with FCPD re enforcement:
  - Deploy temporary FCPD speed display signs where needed
  - Assure periodic police traffic monitoring
- Install Watch-for-Children signs:
  - At all community entrances
- Meet with Beech Tree Elementary School, MSNV, and Iglesia Pentecostal leadership to encourage safe driving by parents and patrons

## Program Rationale

- Eight-Street Program: Addresses speeding issue on all eight streets
- Not intrusive: Not disruptive to traffic
- Straightforward implementation
- Engages FCPD: Naturally keeps police in the loop, including for monitoring drivers at stop signs
- A place to start: Does not preclude future Traffic Calming Program initiatives (e.g., speed humps)

# Hot Spots Issues

## Crossing Valley Brook at Skyview Terrace

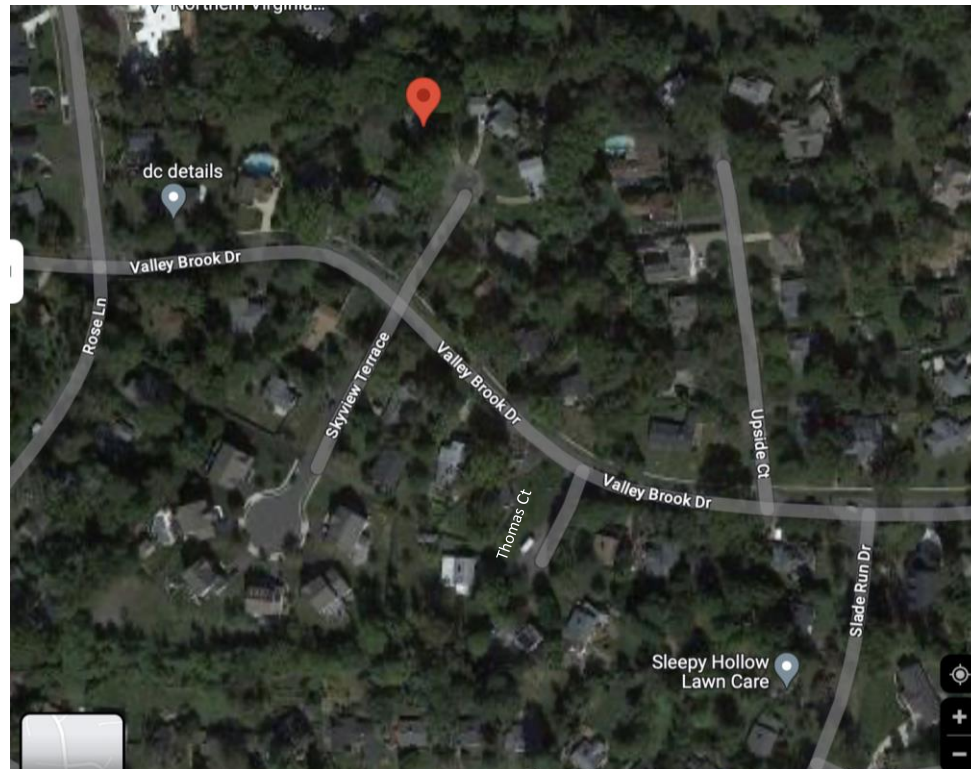
Middle and high school students on Skyview South cross Valley Brook to sidewalk on north side to reach bus stop at Slade Run.

Sight line on Skyview South to eastbound traffic on Valley Brook is limited.

Eastbound traffic accelerates up the hill from Rose, sometimes speeding. No crosswalk.

Similarly difficult for cars on Skyview South to turn left onto Valley Brook.

FCPD monitoring eastbound traffic from Thomas Ct would discourage traffic speeding up the hill from Rose.





# Options for Crossing at Skyview

- In 2022 HRVCA Board asked VDOT for a crosswalk:
- 11 Oct 2022 VDOT email stated that sight distance is not adequate for a crosswalk
- In 25 Oct meeting with FCDOT Board asked:
  - Please take a second look re the possibility of a crosswalk.
  - What are the available options?
  - Is a roadside traffic mirror an option?



## Questions Pending with VDOT

- Valley Brook at Devon South: Would stop signs on Valley Brook improve traffic safety at the intersection?
- Crossing Valley Brook at Skyview: Would a traffic mirror at intersection improve visibility of traffic coming up from Rose Lane.
- Stop Bars: Can stop bars be painted on streets where they are lacking at a number of stop signs, esp. on Devon Dr at Valley Brook.
- Crosswalks: Can visibility of crosswalks at Slade and Hickory Hill and at Holloman and Kennedy be upgraded to “block style.”
- Can edge lines be painted on Valley Brook Dr to better define the edge of the road at night?

## Summary

- Our traffic safety issues and how to address them are well understood
- The \$200-Fine signs coupled with active collaboration with Mason Station FCPD should reduce speeding and stop sign violations
- The pending response from VDOT hopefully will mitigate some of our hot spot issues at Devon South and Skyview
- HRVCA has a solid working relationship with FCDOT, FCPD, and VDOT – they take us seriously
- What happens next is up to the effort the association is willing to apply, e.g., by a Traffic Safety Work Group

# HRVCA Communications

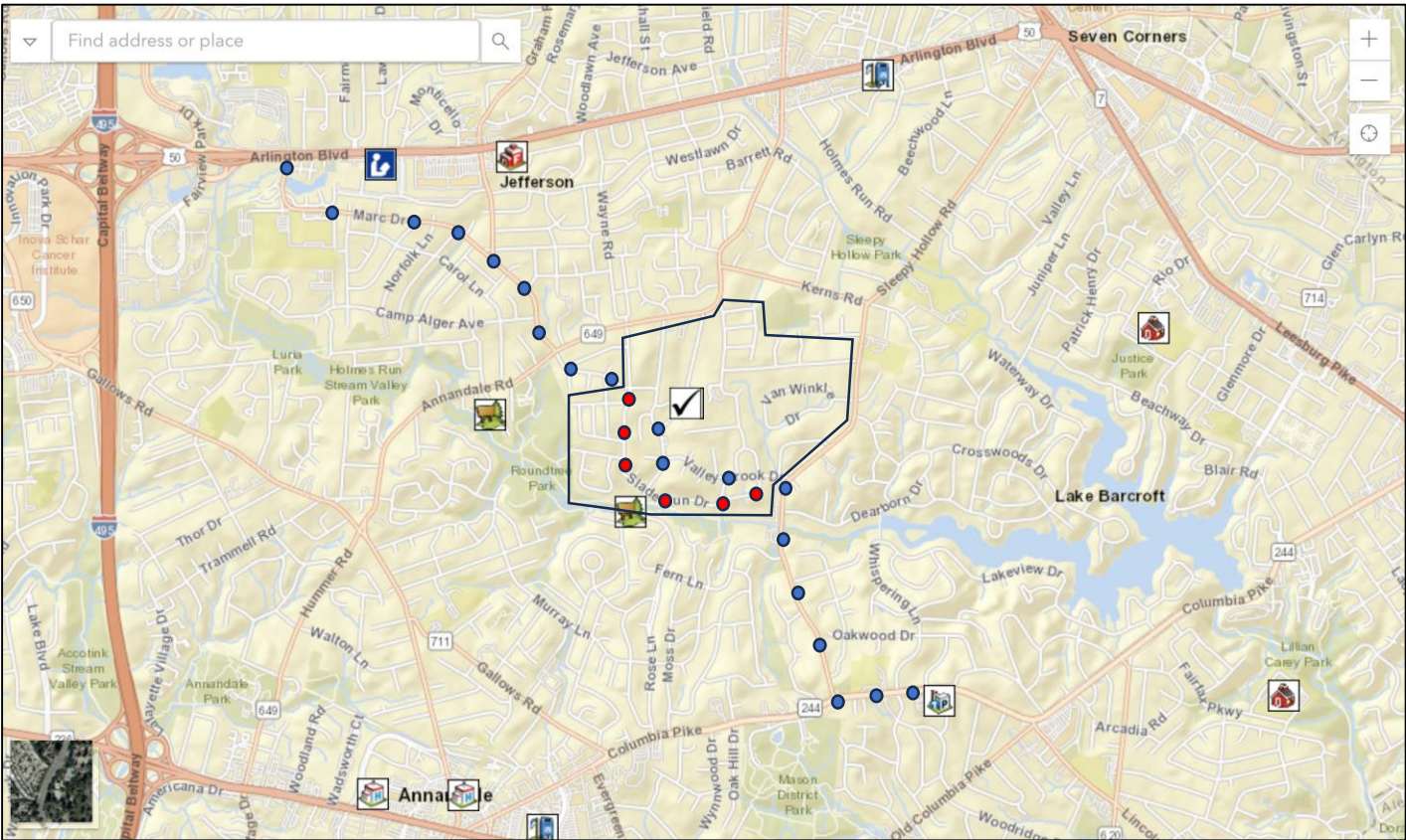
- Current Board:
  - Clyde Miller                      President                      [cmiller3436@gmail.com](mailto:cmiller3436@gmail.com)
  - Jacke Zeiher                      Vice President                      [jzeiher11@gmail.com](mailto:jzeiher11@gmail.com)
  - Mike Paup                      Treasurer                      [mlpaup@gmail.com](mailto:mlpaup@gmail.com)
  - Debbie Rosse                      Director                      [debbiehr@gmail.com](mailto:debbiehr@gmail.com)
  - Jim Robinson                      Director                      [jrcares@yahoo.com](mailto:jrcares@yahoo.com)
- Blog: [holmesrun.org](http://holmesrun.org) (Click on 'Citizens Assoc')
- Email List Service: [holmesrunvalleyca@googlegroups.com](mailto:holmesrunvalleyca@googlegroups.com)

# Back Up Slides

## Prior to Requesting Traffic Calming Program Initiative

- Task Force and Board should meet to assure all understand the task ahead and how it will be accomplished
- Directly affected property owners should be notified that traffic calming measures may be installed in subject streets
- Consequences for traffic on neighboring streets should be addressed.

# Columbia Pike to Arlington Blvd (Rt 50) Is a Major Cut-Through Route



## Traffic & Children: Beechtree Lane

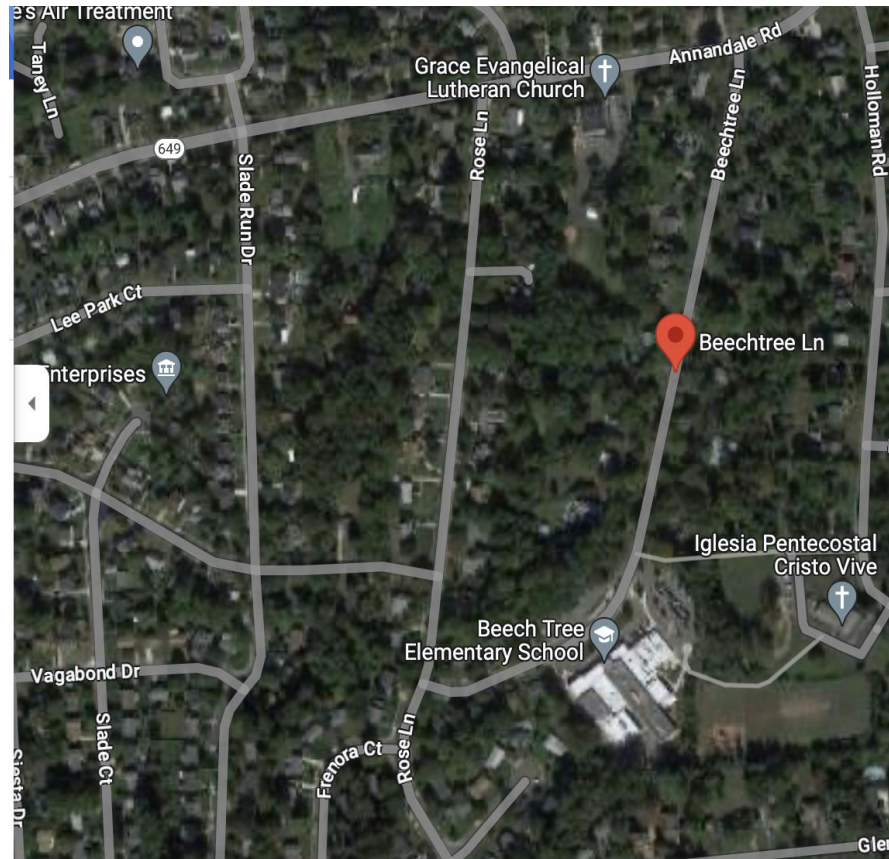
Neighborhood children commonly play outside on Beechtree Lane north of Beech Tree School.

School begins at 9 AM and ends at 4 PM. Extended school day ends at 6 PM.

Every day, for a few minutes either side of 9 AM and 6 PM, parents coming off Annandale Rd speed down Beechtree.

“Beechtree is like a race track during those times.”

FCPD occasionally monitoring south-bound traffic on Beechtree at 9 AM and 6 PM would discourage speeding.





# Traffic Mirror



# HRVCA Street Map

